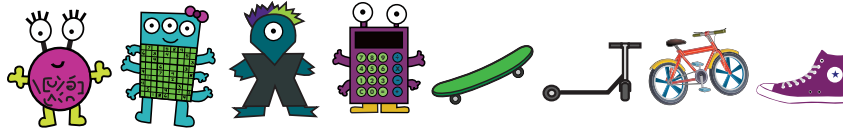










Al Gebra is meeting his pals to go listen to music this weekend. Each pal gets there in their own way. They each have a different colored backpack (blue, red, green, and violet). After you solve the logic puzzle, fill in the answers to the questions below and read the green letters to get the answer. Enter the answer to get the next clue location. Go there and save the clue for the region's meta-puzzle.



1. The pal with the bow doesn't have her helmet with her.
2. The pal with one eye has a backpack that doesn't match his skateboard.
3. The sneakers match the backpack.
4. Lexi Con completes her helmet check before she gets on her bike.
5. The pal decorated his scooter with green stickers to match his backpack.
6. Lexi Con has a backpack that reminds her of her pal, Sue Doku.

What does Cal Culator ride? \_\_\_\_\_

Who has the green backpack? \_\_\_\_\_

Who is walking today? \_\_\_\_\_

What does Al Gebra ride? \_\_\_\_\_

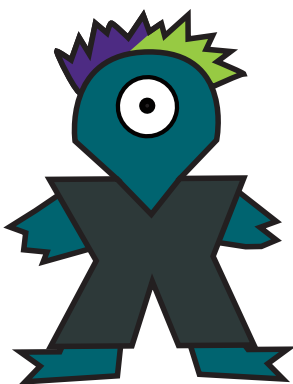
Who has the blue backpack? \_\_\_\_\_

What does Lexi Con ride? \_\_\_\_\_

Who has the red backpack? \_\_\_\_\_

What color is Sue Doku's backpack? \_\_\_\_\_

\_\_\_\_\_



Al Gebra