

# Palo Alto Puzzle Hunt

8

Pat can't wait to visit the animals in Palo Alto with friends and family. To find out where they are, solve the puzzle. Fill in the grid with the animals and read down one of the columns to find your location. Meet them there to find your clues for this week's final answer.



1.

2.

3.

4.

5.

6.

7.

8.

9.

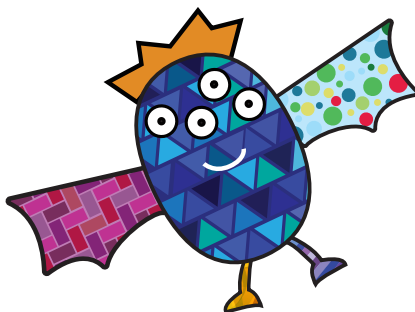
10.

11.

12.

13.

14.



Pat Tern

