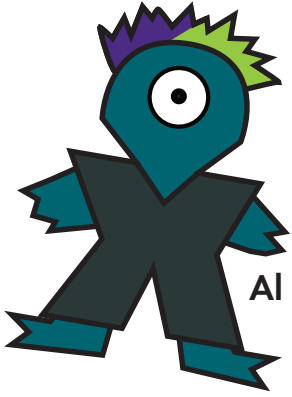




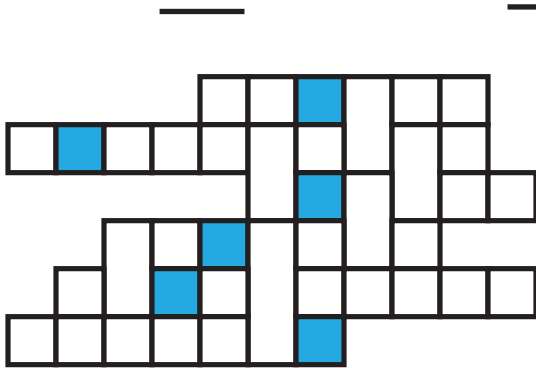
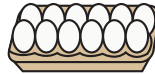
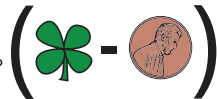
Happy National Puzzle Day!

January 29, 2021



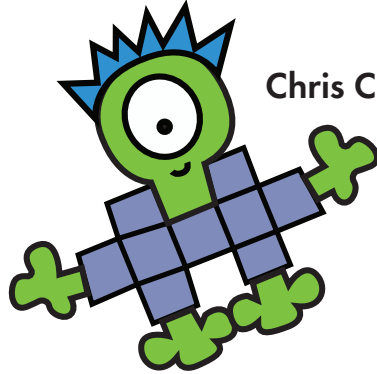
Al Gebra

Convert to numbers and then decode to letters.

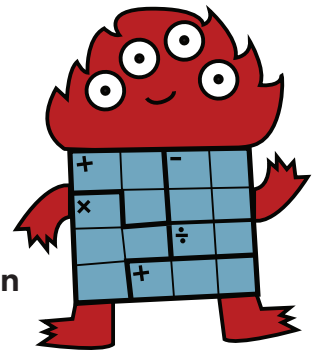


Place each word in the grid. One word per row. The blanks that are taller use the same letter for each row in that column. The BLUE squares will reveal a final answer.

ANAGRAM
ARRANGE
BRAINSTORM
CATEGORIZE
DECODE
SEARCH



Chris Cross



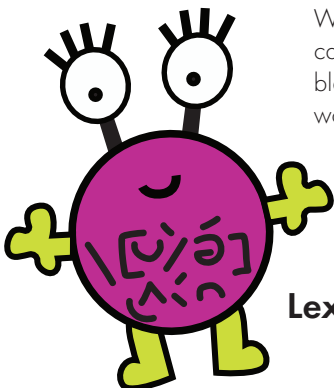
Ken Ken

1. Fill in each square with the numbers 1, 2, or 3
2. Use each number exactly once in each row and column.
3. The small numbers in the upper left corner of each "block" (square with heavy lines) is your "target number" The math symbol next to the target number tells you which operation to use in that block.

1-	4+	
	18x	1-

1-	1-	
	3x	5+

6x	1-	
	7+	
1-		



What single word can you put in all the blanks to create new words?

Lexi Con

___ASTROPHE
LO___ION
S___TERBRAIN
___ERPILLAR
___ALOG
VA___ION
EDU___E
DEDI___ION