

Chris Cross stops for hot chocolate with his pals after soccer practice. Solve the puzzle and enter your answer to find your clue location. Go there to get a clue. Keep track of your clue for the final puzzle.

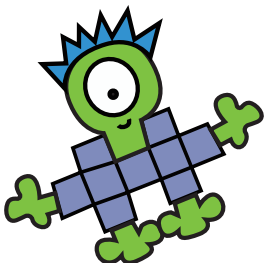


INWARD

- 1 - 6 Horse's home
- 7 - 11 Striped animal
- 12 - 18 Claim as your own
- 19 - 23 Clear the mist
- 24 - 28 Aristocratic
- 29 - 32 Lion hair
- 33 - 37 Looked at

OUTWARD

- 37 - 33 Sleepy coffee
- 32 - 27 Tooth covering
- 26 - 22 Hand Drum
- 21 - 15 ___ Bureau of Investigation
- 14 - 10 Fragrant evergreen
- 9 - 5 Gemstone setting
- 4 - 1 Upside-down critters



Chris Cross

35 25 33 21 18 6

2 16 9 27 32



CITY OF
PALO
ALTO



Cal Culator and his pals are learning all about the history of Palo Alto. They created this puzzle with some of the details they have discovered. Solve the puzzle and enter your answer to get the clue location. Go there to get a clue. Keep track of your clue for the final puzzle. You may want to use a calculator and the internet for some of the answers.

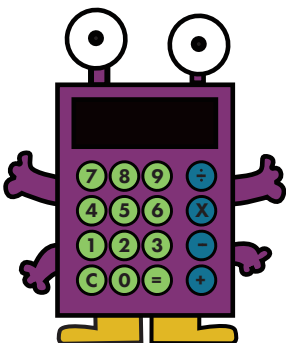
ACROSS

1. 18 down x 6 - 1
4. Address of former Regional Bell Operating Co. now Palo Alto Internet Exchange (PAIX)
7. Year the original rail line for San Francisco and San Jose Railroad connecting SF and SJ began service
9. Year Palo Alto approved the annexation of Mayfield 19_ _
10. 7 squared
11. Year the first semiconductor effect was recorded by Michael Faraday
14. 7 x 6
16. 3 down - 25 across
17. El Camino Real Highway number
19. Last 2 digits of 29 across
21. Year the first iPod was sold
23. 12 down + 22 down
25. The last Super Bowl held at nearby Levi's Stadium, Super Bowl 60 is there too
26. Year Don Hoefler published "Silicon Valley USA", bringing the term to popular culture
28. US highway running through Palo Alto along with 15 down
29. Street address of the first official office of Facebook, located above a Chinese restaurant

1	2	3			4	5	6
7			8			9	
10			11	12	13		
	14	15		16			
		17	18		19	20	
	21			22		23	24
25				26	27		
28					29		

DOWN

1. 13 down - 5 down + 18 down - 25 across
2. Year Palo Alto was incorporated
3. 9 across + 19 across
5. $111 \times 2 + 1$
6. Number between 27 down and 3 down
8. 18 down + 22 down
12. Year Leland Stanford Jr. died of Typhoid Fever 18_ _
13. Address on Addison Avenue where HP began
15. US highway running through Palo Alto along with 28 across
18. First 2 digits of 21 down
20. Year Debbi Fields opened her first store in Palo Alto
21. Number of horses Gaspar de Portola's expedition used in 1769, or two Benjamin Franklins
22. First two digits of 1 down
24. $(50 \times 10) + 22$ down
25. Two quarters plus a penny
27. 1 down - 18 down



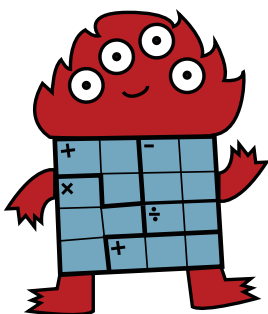
Cal Culator



Palo Alto Puzzle Hunt

4

Ken Ken and his pals have been exploring the hills in Palo Alto and have seen lots of critters around. Solve his puzzle below to get the answer. Fill in each square with the numbers 1-4 (1-6 for the larger grid). Use each number once in each row and column. The small numbers in the upper left corner of each "block" (region with heavy lines) is your target number. The symbol is which operation to use in that block. Then convert the numbers to letters using the critters to decode and the cipher A=1...Z=26. Enter the answer to get the clue location. Go [there](#) to get the clue and keep track of it for the final puzzle.



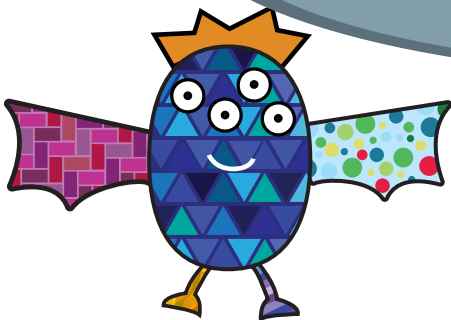
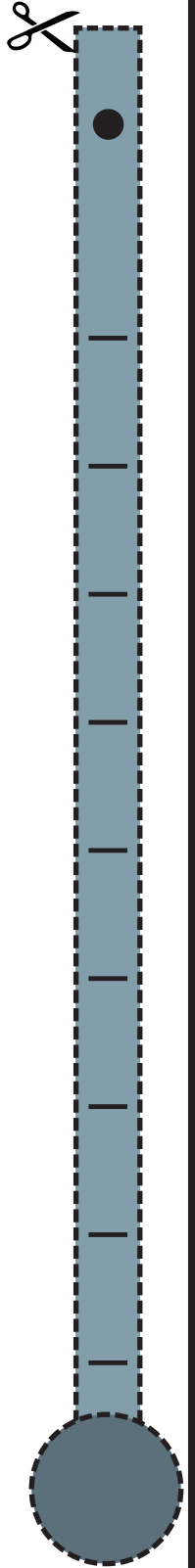
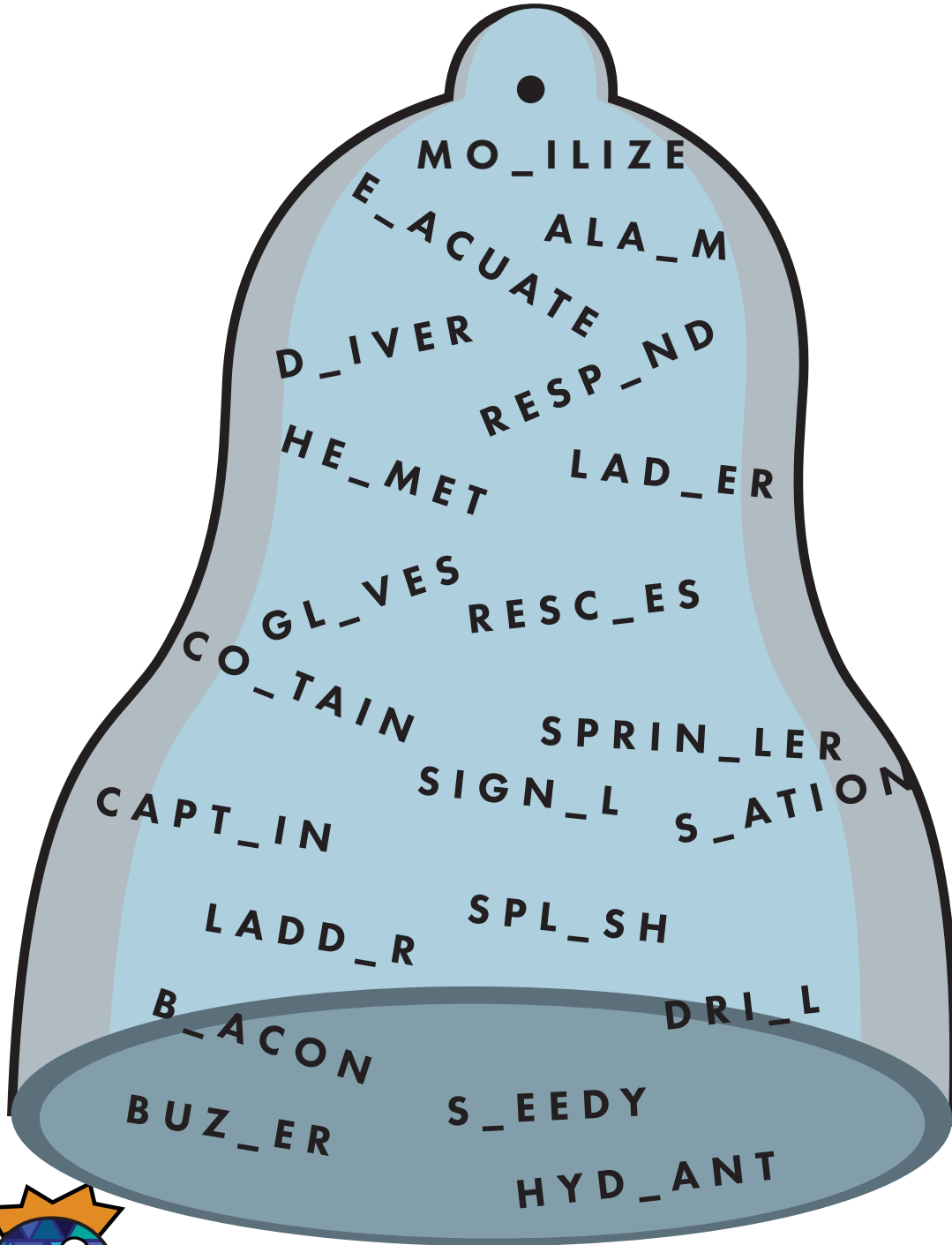
Ken Ken



Palo Alto Puzzle Hunt

5

Pat Tern and their pals had a fire drill at school today. When the bell went off, they all went outside and afterwards created this puzzle for you. Enter the answer to get the clue location. Go there to get the clue and keep track of it for the final puzzle.



Pat Tern



Palo Alto Puzzle Hunt

6

Mo Zaic and his pals are playing on the playground where there is a train play structure. They created this puzzle for you to solve. Fill in the parts of the trains starting at the engines and working towards the cabooses. The numbers outside the grid show how many parts in each row and column are used. Figure out the order of the letters formed by the filled in parts. Enter the answer to find a clue location. Go there to get a clue and keep track of it for the final puzzle.

4 3 3 4 0

4					
1					
4					
1					
4					

Sample

	1	2	2	3
2				
2				
2				
2				

5 2 2 2 3

4					
2					
2					
2					
4					

0 2 5 2 0

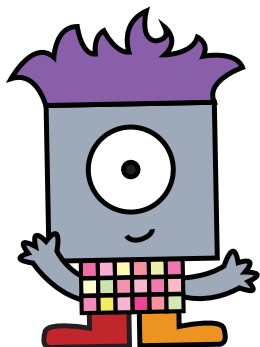
3					
1					
1					
1					
3					

5 3 3 2 2

5					
1					
3					
1					
5					

5 2 2 3 2

4					
2					
4					
2					
2					



Mo Zaic



Palo Alto Puzzle Hunt

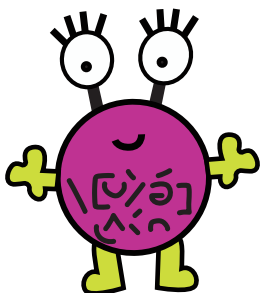
7

Lexi Con loves learning about historical women. She and her pals created this puzzle for you to solve. Use the words listed below to help identify the US Presidents' wives. Match them up to get your answer. Enter the answer to find the clue location. Go there to get a clue and keep track of it for the final puzzle.



BALLAD
CHARD
FORBID
HEARTTHROB
MATCHA
SCAR
STRUM
SUGAR
YAHOO

AMASS
AMSTERDAM
ANOTHER
ENTERTAIN
FIELDTRIP
INGENUITY
TERRIFIC
VERBAL
YESTERDAY



Lexi Con

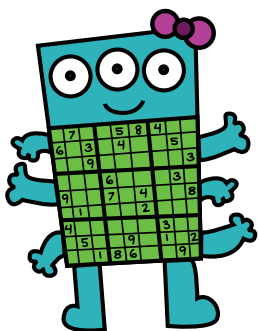


© SolvingFun, LLC 2026

Palo Alto Puzzle Hunt

8

Sue Doku loves drawing at the park with chalk. She created these puzzles for you to solve. In each of the three puzzles, use the images provided. Fill in the missing squares so that each row, column, and bolded region has one of each image. Use the first letter of each circled image to get this puzzle's answer. Enter the answer to get this puzzle's location. Go there to find a clue for the meta-puzzle.



Sue Doku

