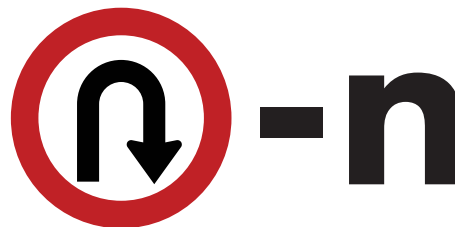
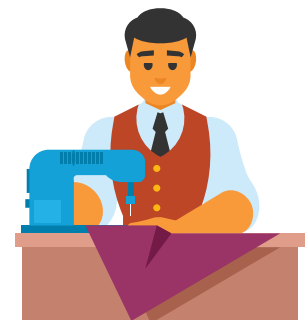
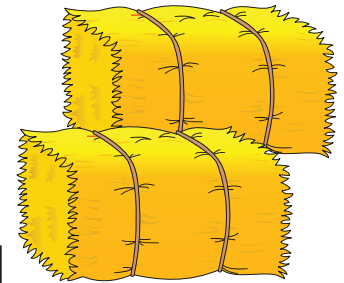
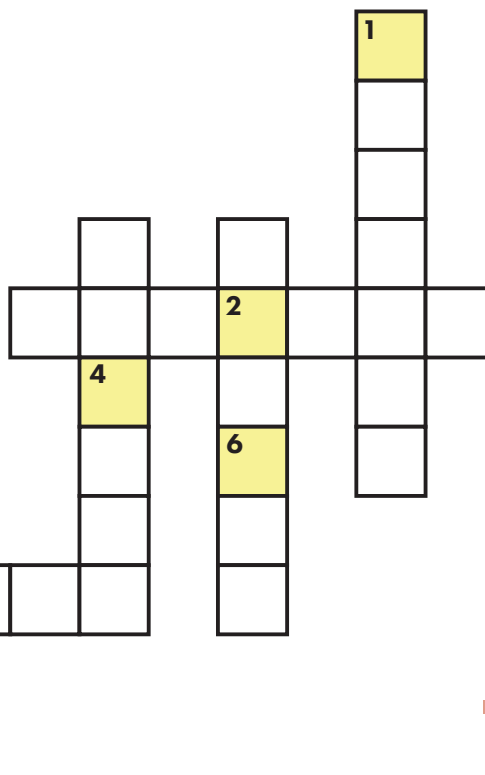
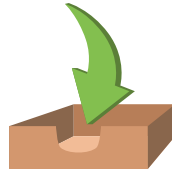
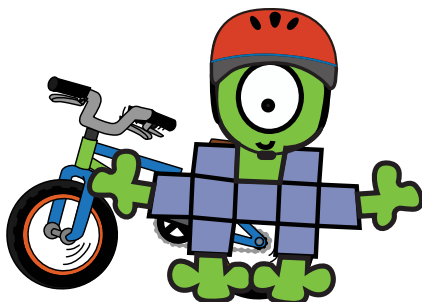


Chris Cross is riding his bike along the trails on his way to meet his pals. To find out where, solve the puzzle below. Identify the US Presidents' names and fill them in the grid. Enter the answer to find the clue location. Go there to get the clue for this region's meta-puzzle. When riding your bike, be sure to check your helmet fits and keep it clicked correctly.



-n



Chris Cross