

Smile Puzzles

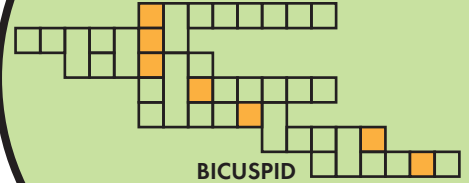


Fill in each square with the numbers 1, 2, or 3. Use each number exactly once in each row and column. The small numbers in the upper left corner of each "block." (square with heavy lines) is your "target number" The math symbol next to the target number tells you which operation to use in that block.

1-	3x	
	7+	
3x		

Happy Solving!

Place one word per row in the grid. The blanks that are taller use the same letter for each row in that column. The gold squares will reveal something that can get stuck in teeth.



BICUSPID
CANINE
CUSPID
INCISOR
MOLAR
PREMOLAR
WISDOM

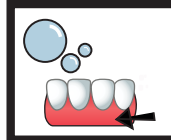
Which toothpaste will end up on the toothbrush?



Fill in the empty rows with numbers 1,2,3 or 4. Each number can be used only once per column, row, and block.

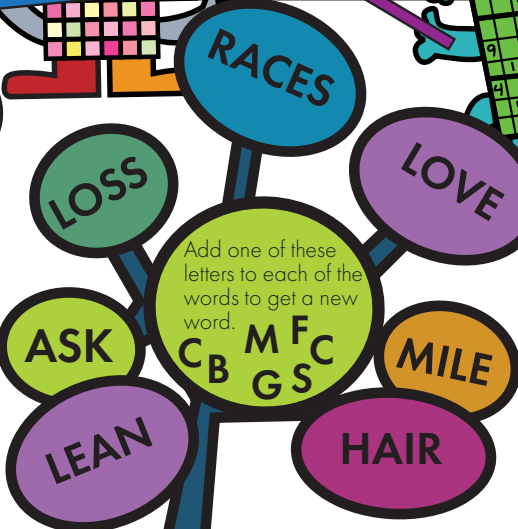
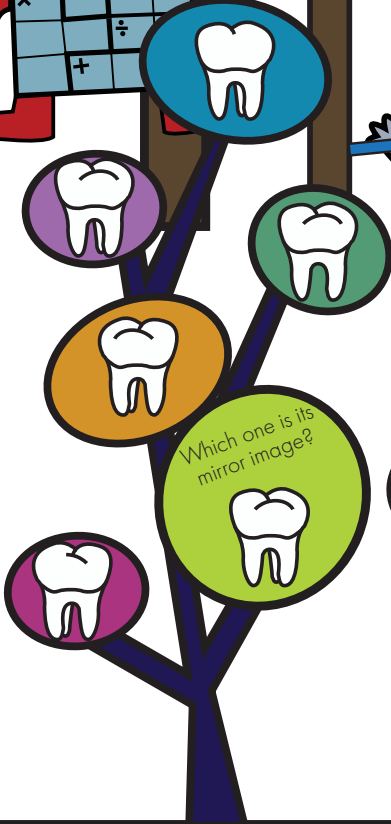
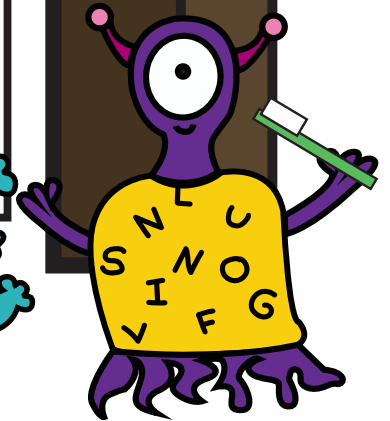
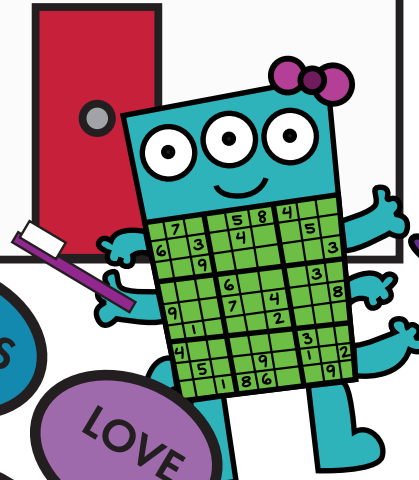
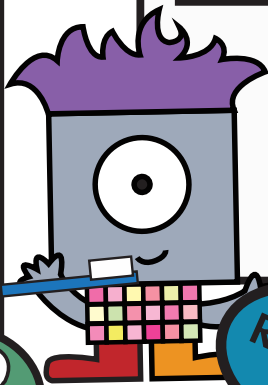
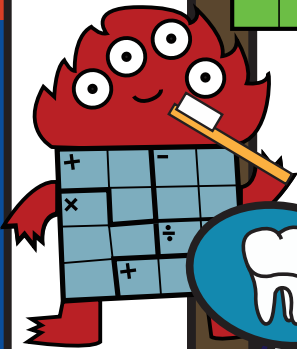
3	2	6		
6	4			
5				
			1	
	6		2	
	3	2		4

What's your favorite flavor of toothpaste?



Unscramble the letters to reveal words.

VITAYC
IRNTERAE
BHROUHS
RXYA
LIFLGN



For more puzzles:



www.solvingfun.com