
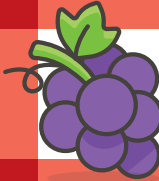
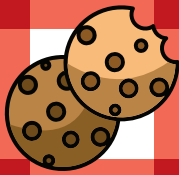






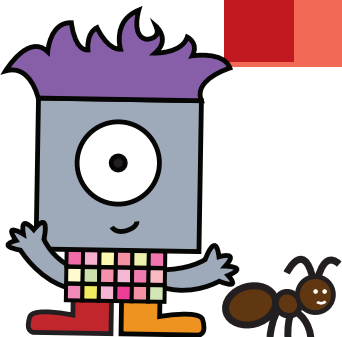
# Palo Alto Puzzle Hunt

3

Mo is excited to have a picnic at the park nearby and play on the playground. To figure out which park he's going to, solve the puzzle. Place ants on the blanket. Each item of food needs its own ant next to it, above it or below it, but not diagonally. The numbers tell you how many ants are in each row or column. There can't be two ants next to each other, even diagonally. Read the letters that get covered by ants to tell you which park to go to.



	<b>2</b>	<b>0</b>	<b>2</b>	<b>1</b>	<b>1</b>	
<b>2</b>	N	T	P		A	
<b>1</b>	R	M	O			
<b>1</b>		L	S	D	X	
<b>1</b>	E		V	I	U	
<b>1</b>	M	C	E	O	L	
<b>0</b>	H	I		W	Y	



Mo Zaic

